

# THC Saliva Test

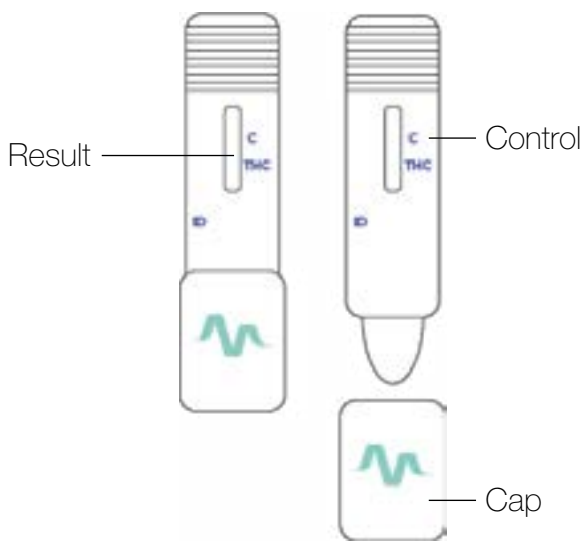
## • Biology

The THC saliva test detects  $\Delta 9$ -Tetrahydrocannabinol (THC), which is the cannabis main psychoactive component, with a threshold of 50ng/ml.

## • Content

- 1 pouch with 1 screening device and its cap
- 1 instruction
- 1 support booklet

Open the pouch when you are doing the test. The desiccant should not be used.



## • Precautions

1. Only for external use.
2. Read carefully the instructions before having the test.
3. Keep between 2°C and 30°C. Do not deep-freeze.
4. Do not use after the expiry date or if the pouch is damaged.
5. Do not use the test again.
6. Keep away from children.
7. After use, throw all components away.

## • Use

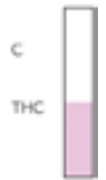
1. Do not eat, drink or smoke 10 minutes before the test.
2. Once the pouch is open you should do the test.
3. Place the saliva collector under your tongue. Hold it slightly tilted up (around 15°) and press constantly your tongue against the collector. Do not bite or chew the device.



4. Keep it in your mouth until the pink migration appears (about 1 min).

Caution! do not remove before the pink migration appears or you might have an invalid test.

The pink migration appearance may vary according to people, it can last up to 10 min.



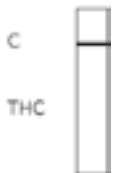
5. Close with the cap and leave it flat for 6-7 min. Then read results. Do not exceed 15 min.

## • Results

### POSITIVE

THC STRIP NON VISIBLE

The test is positive to cannabis when a strip appears next to C (Control) and not next to THC. You should not do any action needing full attention or focus, such as driving.



### NEGATIVE

THC STRIP VISIBLE

The test is negative to cannabis when a strip appears next to C (Control) and also next to THC. Intensity of strips may vary. Even a very light strip next to THC indicates a false result.

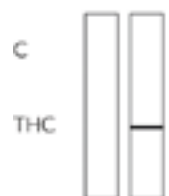


### INVALID

C STRIP NON VISIBLE

The test is invalid when there is no strip next to C (Control). It often happens when the instructions are not completely respected.

Read the instructions and do another test.



- **Test limits**

## IMPORTANT

This screening test should be done at least 12 hours after using a psychoactive substance.

A negative result does not necessarily imply there is no psychoactive substance.

If their concentration is below the test threshold, it can appear in the saliva sample.

**IF YOU HAVE ANY DOUBT, DO NOT DRIVE!**



---

[contact@medisur.fr](mailto:contact@medisur.fr)  
+33 4 42 96 09 68  
[www.medisur.fr](http://www.medisur.fr)



**MEDISUR**  
100 Impasse des Houillères  
13590 Meyreuil, France

ref. CANNA\_SAL01  
rev. 01/2020

 **JEUNE ENTREPRISE  
FRANÇAISE**